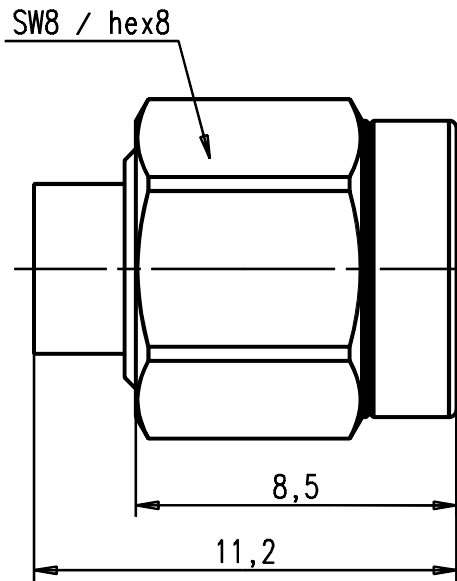
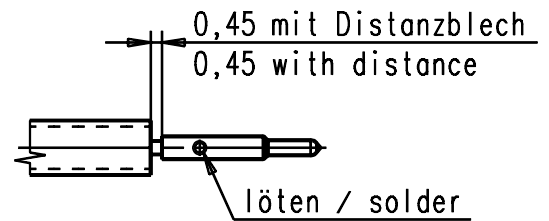
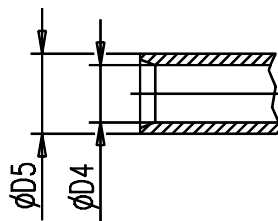
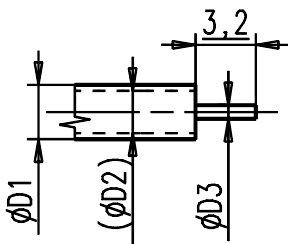


Steckbereich nach IEC 169-15 Grade1
Mating area acc.to IEC 169-15 Grade1



Kabelzuschnitt
Stripping dimension
Semi-Rigid



Für Kabel /
For cable

Anschluss /
connecting area

Gr.	Typ / type	$\phi D1$	$\phi D2$	$\phi D3$	$\phi D4$	$\phi D5$
6	RG405/U	2,20	1,68	0,51	2,25	3,10
7	RG402/U	3,58	3,00	0,91	3,65	4,50

1:1



IMS CONNECTOR SYSTEMS

general tolerance
ISO 2768
mH

scale: 5:1 (1:1)

Assembly instruction:
Stripping dimension:

	date	name
generate	10.12.84	Pfaff
checked		
Norm		
30983		

Kabelstecker

Cable mount plug

342/01	b	Neue Ueberwurfmutter	22.05.01	Hogg
	a	UEBERARBEITUNG	02.12.86	Bär
nr.	rev.	alteration	date	name



211.42.1810.0''

Rev.
b